

2 Important Areas for New Zealand Seabirds

Sites on Land

Rivers, estuaries, coastal
lagoons & harbours



Forest & Bird
GIVING NATURE A VOICE



IMPORTANT AREAS FOR NEW ZEALAND SEABIRDS



This document has been prepared for Forest & Bird by Chris Gaskin, IBA Project Coordinator (NZ).

The Royal Forest & Bird Protection Society of New Zealand
Level One, 90 Ghuznee Street
PO Box 631
Wellington 6140
NEW ZEALAND

This report is available from the Forest & Bird website in pdf form.

© Copyright February 2016, Forest & Bird

Contributors

The following individuals have contributed to the profiles in this document in a variety of ways, including supply of data and information about seabirds, and reviewing draft material, site profiles, species lists and site maps.

Nick Allen, Tim Barnard, Tony Beauchamp, Mike Bell, Mark Bellingham, Robin Blyth, Phil Bradfield, John Cheyne, Wynston Cooper, Andrew Crossland, Philippa Crisp, Paul Cuming, John Dowding, Hannah Edmonds, Lloyd Esler, Julian Fitter, Peter Frost, Mel Galbraith, Liz Garson, Peter Gaze, Andrew Grant, Tony Habraken, Kate Hand, Ken Hughey, Elaine Lagnaz, Chris Lalas, Peter Langlands, David Lawrie, Eila Lawson, Nick Ledgard, Nikki McArthur, Rachel McClellan, Craig McKenzie, Bruce McKinlay, Michael McSweeney, David Melville, Gary Melville, Mark O'Brien, Colin O'Donnell, Gwenda Pulham, Aalbert Rebergen, Phil Rhodes, Adrien Riegen, Neil Robertson, Paul Sagar, Frances Schmechel, Rob Schuckard, Ian Southey, Kate Steffens, Graeme Taylor, Gillian Vaughan, Jan Walker, Susan Waugh, David Wilson, Kerry-Jayne Wilson, Steve Wood, Keith Woodley.

Cover design: Danielle McBride, Paradigm Associates, Auckland

Front cover: Rachel McLellan (Black-billed Gulls), Craig McKenzie (Black-fronted Tern)

Back cover: Frederic Pelsy (Ahuriri River)

Recommended citation: Forest & Bird (2016). *New Zealand Seabirds: Sites on Land, Rivers, estuaries, coastal lagoons & harbours*. The Royal Forest & Bird Protection Society of New Zealand, Wellington, New Zealand.

NZ044	Upper Buller	Nelson
-------	--------------	--------

Location	New Zealand, Nelson
Central coordinates	41.790769°S, 172.321587°E (Buller Matakītaki confluence)
IBA criteria	A1
Area	8367 ha
Altitude	150 - 500m
Year of Assessment	2013

Populations of IBA trigger species:

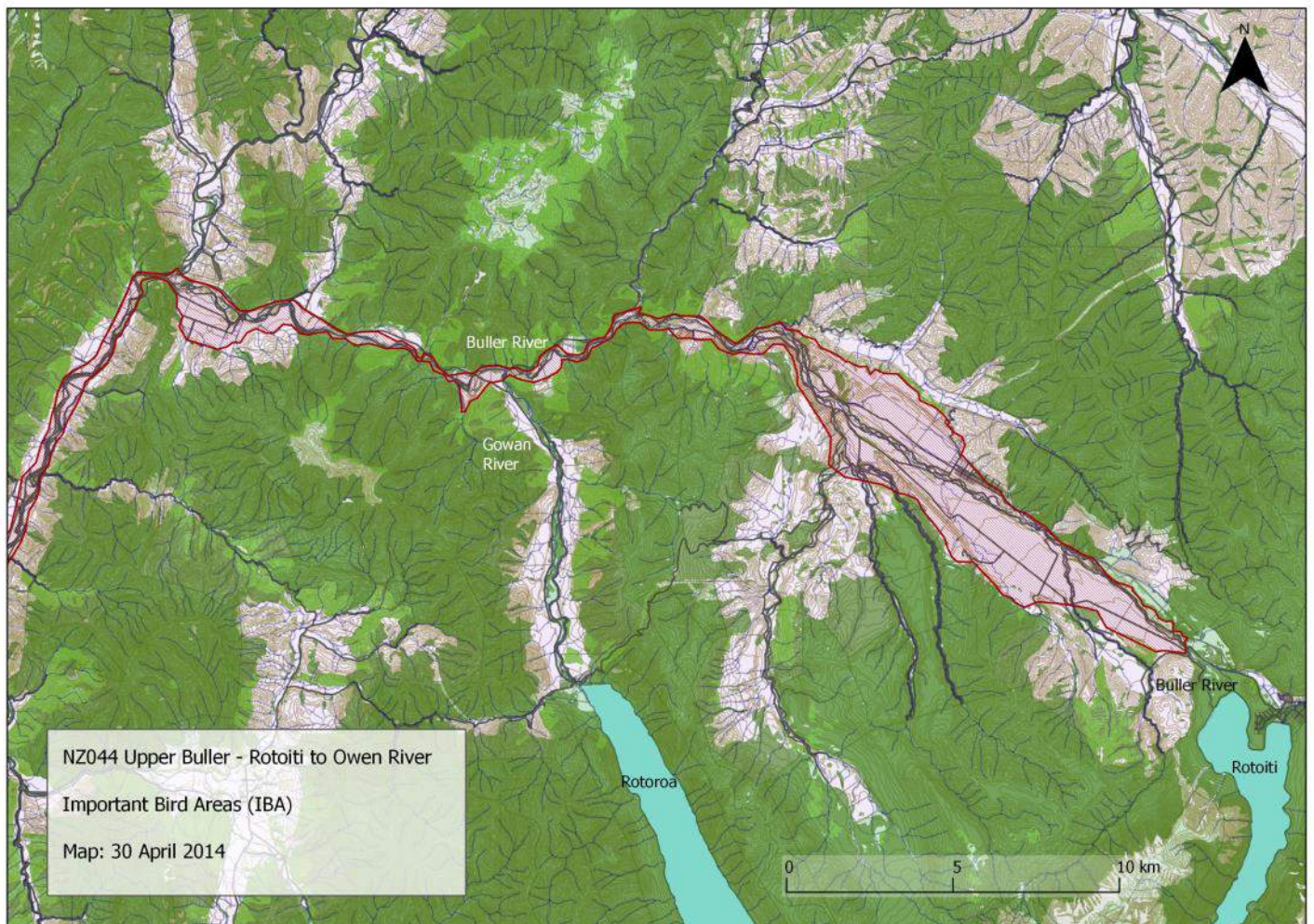
Species	Season	Period	Population estimate (pairs)	IBA criteria	IUCN cat.	NZ Threat Class.
Black-billed Gull	Breeding	1995-2014	77-250	A1	EN	Nationally Critical
Black-fronted Tern	Breeding	1979-2008	12-37 (individuals)	A1, A4i	EN	Nationally Vulnerable

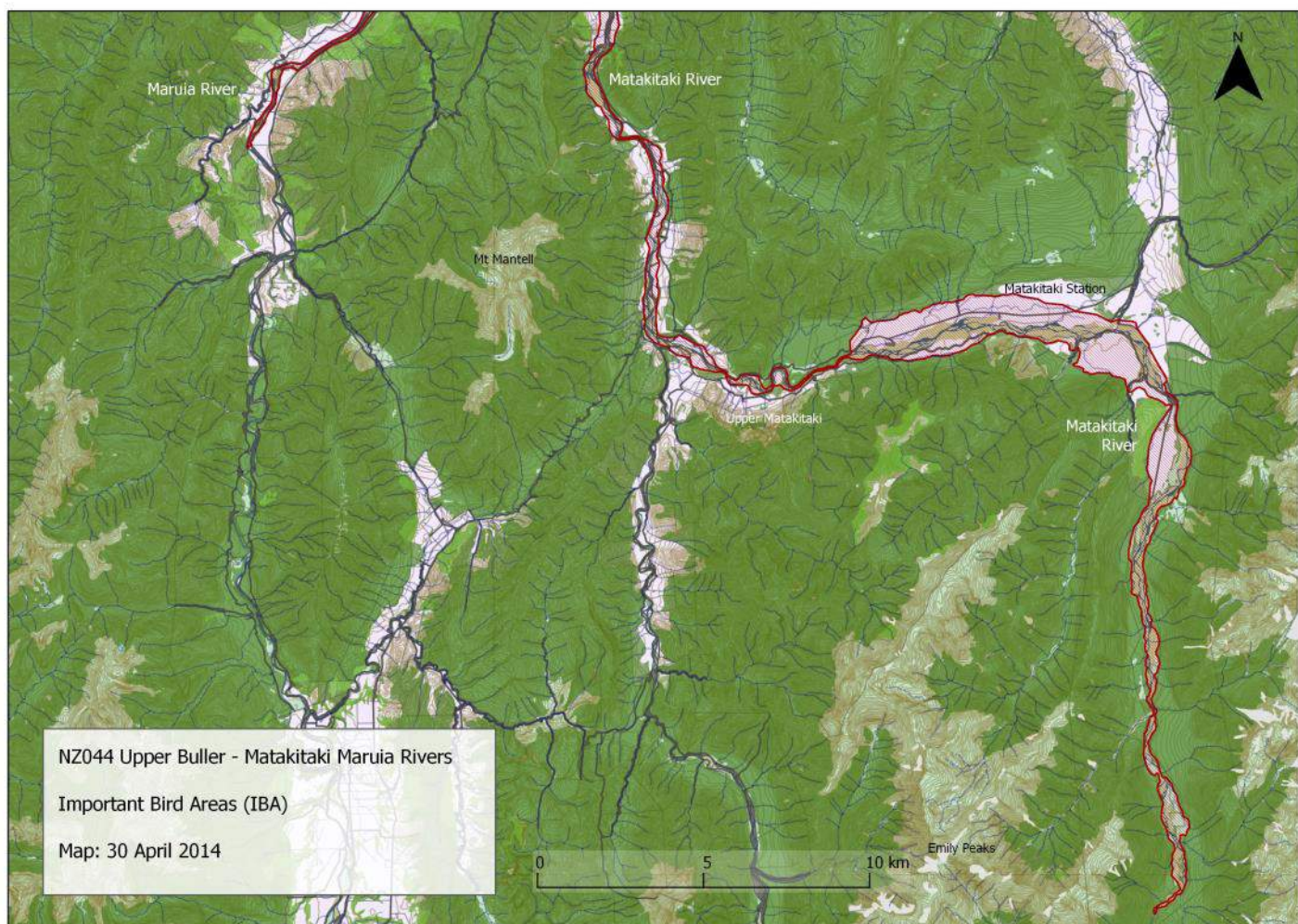
Ornithological information: Besides the trigger species the following are confirmed or likely to be breeding: Black Shag, Little Shag, White-faced Heron, Canada Goose, Paradise Shelduck, Grey Duck/Mallard, Australasian Harrier, NZ Falcon, Pukeko, South Island Pied Oystercatcher, Banded Dotterel, Spur-winged Plover, Southern Black-backed Gull, NZ Pigeon, Shining Cuckoo, Morepork, NZ Kingfisher, Welcome Swallow, NZ Pipit, Grey Warbler, South Island Fantail, South Island Tomtit, Silvereye, Bellbird, Tui. Skylark, Blackbird, Song Thrush, Yellowhammer, Chaffinch, Greenfinch, Goldfinch, Redpoll, House Sparrow, Starling.

Kaka (EN), Red-crowned Parakeet (VU), Yellow-crowned Parakeet (NT), Rifleman, Brown Creeper and NZ Robin have been recorded in adjacent forest areas (Atlas of Bird Distribution in NZ 2007).

Protected area	Designation	Relationship with IBA
Howard River Valley	Scientific Reserve	Protected area contained within site
Nuggety Road	Conservation Area	Protected area contained within site
Buller River - Thurlow	Conservation Area	Protected area contained within site
Riverbed Buller River	Conservation Area	Protected area contained within site
Matakītaki River	Conservation Area	Protected area contained within site
Maruia River Paenga	Conservation Area	Protected area contained within site

The IBA includes small river sections of the following: Kahurangi National Park, Big Bush Conservation Area, Glenhope Scenic Reserve, Owen River Scenic Reserve, Maruia Falls Scenic Reserve, Matakītaki West Conservation Area, Shenandoah Scenic Reserve, Matakītaki South Conservation Area, Matakītaki River Headwaters conservation Area. There are also some Marginal Strips and one Local Purpose Reserve (Ferry).





IUCN Habitat	Habitat detail	Extent (% of site)
Wetlands (inland)	Permanent Rivers; River gravel beds	Major
Introduced Vegetation	Pastureland; Lupin, pasture grasses & rank weeds; Willow margins, shelter belts	Major
Grasslands	Tussock on river flats (upper valleys)	Minor
Shrubland	Manuka, matagouri (<i>Discaria toumatou</i>), bracken	Major

Threats to the site (pressure) - IUCN Classifications

Threat Level	Notes	Timing	Scope	Severity
Invasive & other problematic species, genes & diseases	Invasive alien species - mustelids, cats, rats, hedgehogs	Happening now	Some of area/ population (10-49%)	Moderate to rapid deterioration
Human intrusions and disturbance	Recreational activities by river users - includes dogs.	Happening now	Some of area/ population (10-49%)	Slow but significant deterioration
Climate change and severe weather	Floods	Likely in short term (within 4 years)	Some of area/ population (10-49%)	Moderate to rapid deterioration

References:

- O'Donnell, C.F.J., Hoare, J.M. 2011. Meta-analysis of status and trends in breeding populations of black-fronted terns (*Chlidonias albostratus*) 1962-2008. *New Zealand Journal of Ecology* 35: 32-43
- Robertson, C.J.R., Hyvönen, P., Fraser, M.J., Pickard, C.R. 2007. *Atlas of bird distribution in New Zealand 1999-2004*. Ornithological Society of New Zealand, Inc. Wellington.
- Steffens, K. 2007. A comparison of Braided River Bird Surveys from Matakita and Buller Rivers 1995-2007. Internal report DOCDM-224892. Department of Conservation, Nelson Lakes.
- Steffens, K. 2012. Helicopter surveys of black-fronted terns in Marlborough, New Zealand. Internal report DOCDM-892932. Department of Conservation, Nelson Lakes.



Forest & Bird
GIVING NATURE A VOICE

www.forestandbird.org.nz/important-bird-areas

Photo: Frederic Pelsy
Front: Rachel McClellan, Craig McKenzie