

Braided river birds – Rakaia River

Terns



Rod Morris

White-fronted tern 42 cm

- FOREHEAD **white**, separating black cap from bill
- BILL black with white tip
- UNDERBODY white



Barry Harcourt

Black-fronted tern 30 cm

- FOREHEAD from bill to nape **black**
- Thin white line below eye, rest of body grey
- BILL and FEET orange-brown/red
- UNDERBODY pale grey, prominent white rump in flight



Rod Morris

White-fronted tern in flight

- **WHITE** under body



A. A. Reberga

Black-fronted tern in flight

- **GREY** under body



Rod Morris

Caspian tern 51 cm

- Slight crest
- BILL red or orange, yellow tip
- PLUMAGE back of neck, rump and tail white
- UNDERBODY white

White-winged black tern 23 cm

- Breeding-black head and body, white tail
- Immature-black u-shaped band from eye to eye around crown



Illustration: Ornithological Society of New Zealand Inc.

Gulls

Black-billed gull 37 cm

- Outer wing primaries white with black border and tip
- BILL and LEGS black



Rod Morris



Peter Blok

Red-billed gull 37 cm

- In flight has white flash on wing tip
- BILL and LEGS red/orange

Southern black-backed gull, adult 60 cm



Mike AVISS



F. C. Kinsky

Southern black-backed gull, juvenile

Shags

Spotted shag 73 cm

- Green face
- PLUMAGE black spots on back



Peter Morrison

Black shag 88 cm

- Prominent yellow throat
- PLUMAGE throat black with yellow spots during breeding season
- IN FLIGHT tail is shorter than neck



G. H. Sherley



L. J. Richards



J. L. Kendrick

Little shag 56 cm

- PLUMAGE all black (juvenile), white-throated (adult) and pied
- IN FLIGHT tail as long as neck



Rod Morris

Kingfisher 24 cm

- BILL large



A. G. Hall

Harrier 60 cm

- IN FLIGHT white upper tail coverts visible
- Long legs when perched

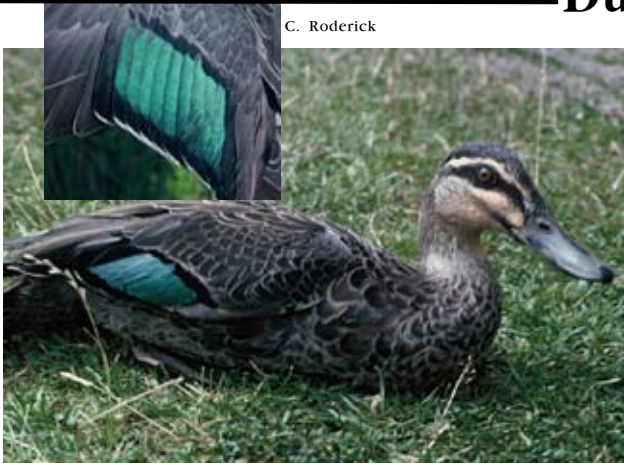


P. R. Clerke

NZ pipit 19 cm

- No head crest
- Walks with a dipping motion
- BILL long and fine
- Does not soar

Ducks and teals



C. Roderick

C. Roderick

Grey duck 55 cm

- SPECULUM green bordered by black (see inset)
- Light throat and face with dark eye stripe



D. Veitch

C. Roderick

Mallard (female) 58 cm

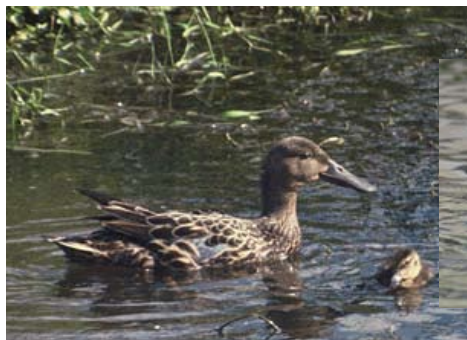
- SPECULUM blue, bordered by black (see right)



C. S. Robertson

Grey teal 43 cm

- Lack of eye stripe
- SPECULUM glossy black with blue-ish sheen
- IN FLIGHT prominent white triangle on upper wing



R. Sutton

J. L. Kendrick

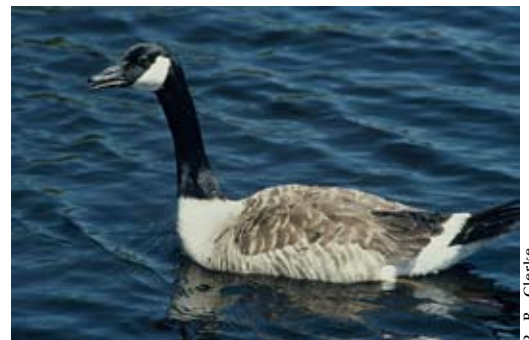
Shoveler (female)

- BILL long and wedge shaped (see inset)
- PLUMAGE male has distinctive white flank
- IN FLIGHT triangular white bar conspicuous between green speculum and blue coverts



Paradise shelduck 63 cm

Canada goose 100 cm



P. R. Clerke



D. Veitch

Spur-winged plover 38 cm

- Large yellow wattles
- BILL yellow

There are many other species that occur in this area. If you are unsure of a bird, and there is no-one to verify it, please describe and draw it as clearly as possible.

Thank you



D. Veitch

Welcome swallow 15 cm

- Small and streamlined
- IN FLIGHT deeply forked tail, often seen skimming over water

Stilts



Barry Harcourt

Pied stilt

- Legs long
- IN FLIGHT legs and feet extended



Juvenile black stilt

- Legs long
- Distinguished from pied stilt by pale or mottled hind neck



Rod Morris

Hybrid stilts

Can have any number of patterns. NOTE: Draw any stilts with unusual plumage, unless certain.



D. P. Murray



R. Smith

Pied oystercatcher

- Legs short
- PLUMAGE distinctive white bay in front of wing
- IN FLIGHT broad white bands on upper wings extend towards tip and almost join wedge of white in rump

Turnstone 23 cm

- Legs short, orange
- PLUMAGE variegated. Utters a twittering 'kittit' when disturbed.



A. Crossland

Dotterels

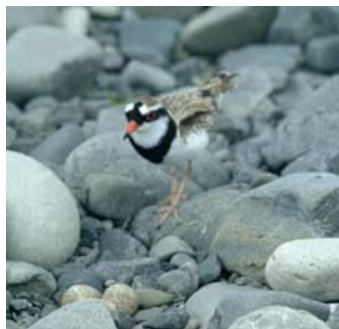


P. J. Moore

Banded dotterel

18 cm

- BANDS breeding plumage-2 breast bands, narrow black upper band and broad chestnut lower band (non-breeding-chest bands are blurred or reduced)
- BILL black
- IN FLIGHT faint wing stripe visible



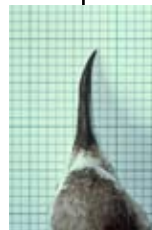
J. L. Kendrick

Black-fronted dotterel 18 cm

- BANDS one Y-shaped black chest band
- Black and white pattern on head
- BILL red with black tip
- Red eye ring
- IN FLIGHT white wing patch and black primaries.

IMPORTANT NOTE:

Wrybill are ESPECIALLY hard to see. They blend into their habitat very well. Please be extra vigilant in looking for them. Their vocalisation is a soft 'peep'. If you hear this noise please try to track it down.



D. Veitch



Wrybill 20 cm

- BAND single dark chest stripe
- BILL bent to right (see smaller image)



Department of Conservation
Te Papa Atawhai